

# SRC Operations Group - Service3

## SKA Regional Center Networking meeting

Shaoguang Guo<sup>1,2</sup> Tao An<sup>1,2</sup> Zhijun Xu<sup>1,2</sup>  
on behalf of CNSRC

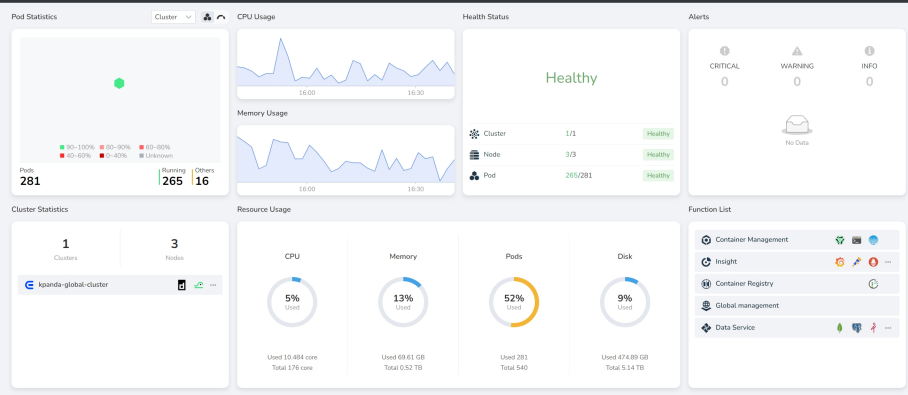
1.Shanghai Astronomical Observatory 2.Chinese Academy of Science

2024.09.18



# CNSRC k8s homepage

• <https://202.127.3.157:31000/ipavo>



# SODA service

- reviewd <https://ska-telescope.gitlab.io/src/kb/ska-src-docs-operator/services/local/mandatory/soda-services/visivo-soda.html>
- Currently deploy in CANFAR  
<https://canfar.shao.ac.cn/science-portal/>, now working

The screenshot displays the SRC Net Science Portal interface. At the top left is the SRC Net logo, and at the top right is the user name 'shaoguang'. The main heading is 'Science Portal'. Below this, there are two main sections: 'Active Sessions' and 'New Session'.

**Active Sessions:** A box indicates 'No interactive sessions found'. A green progress bar is visible at the top of this section.

**New Session:** A form for creating a new session with the following fields:

- type:** A dropdown menu with 'carta' selected. This field is highlighted with a red rectangle.
- container image:** 'skaha/carta:4.0'
- name:** 'carta1'
- memory:** '8'
- # cores:** '2'

Buttons for 'Launch' and 'Reset' are at the bottom of the form.

**Platform Load:** A section showing system resources:

- Available CPUs:** 176 / 176. A bar chart shows 0% CPU usage.
- Available RAM:** 534.14G / 534.14G. A bar chart shows 0% memory usage.
- Running Instances:** 0

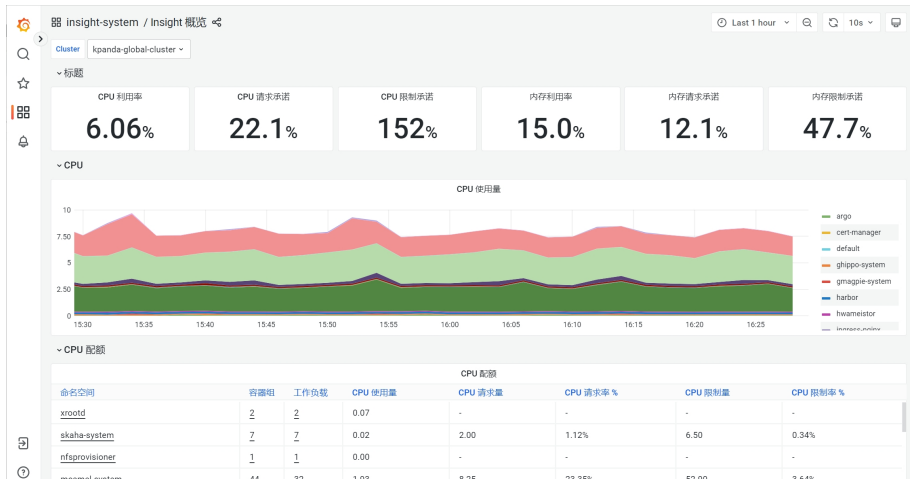
- <https://canfar.shao.ac.cn/argocd>

The screenshot displays the Argo CD web interface. On the left is a dark sidebar with the Argo logo and version 'v2.7.3+e70918d.d...'. Below the logo are navigation links: Applications, Settings, User Info, and Documentation. Further down are sections for 'Favorites Only', 'SYNC STATUS' (Unknown: 0, Synced: 0, OutOfSync: 1), 'HEALTH STATUS' (Unknown: 0, Progressing: 0, Suspended: 0, Healthy: 0, Degraded: 1, Missing: 0), and 'LABELS'. The main content area is titled 'Applications' and features a search bar and buttons for '+ NEW APP', 'SYNC APPS', and 'REFRESH APPS'. A 'Log out' button is in the top right. Below the search bar, a card for the 'guestbook' application is shown. The card details include: Project: default; Labels: (empty); Status: Degraded OutOfSync; Repository: https://github.com/argoproj/argocd-example-apps.git; Target Revision: HEAD; Path: helm-guestbook; Destination: in-cluster; Namespace: default; Created At: 09/18/2024 15:27:06 (an hour ago). At the bottom of the card are buttons for SYNC, REFRESH, and DELETE. The top right of the main area shows 'APPLICATIONS TILES' and 'Sort: name Items per page: 10'.

# Local Service Monitoring

:link: <https://202.127.3.157:31000/>

Find more about : <https://last9.io/blog/prometheus-vs-victoriametrics/>



# TODOLists

- Setup a new router to make sure k8s node available
- ArgoCD demos